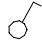
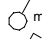
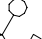
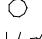
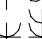
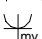


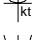
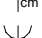






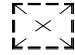
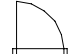


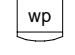
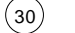
Renvooi

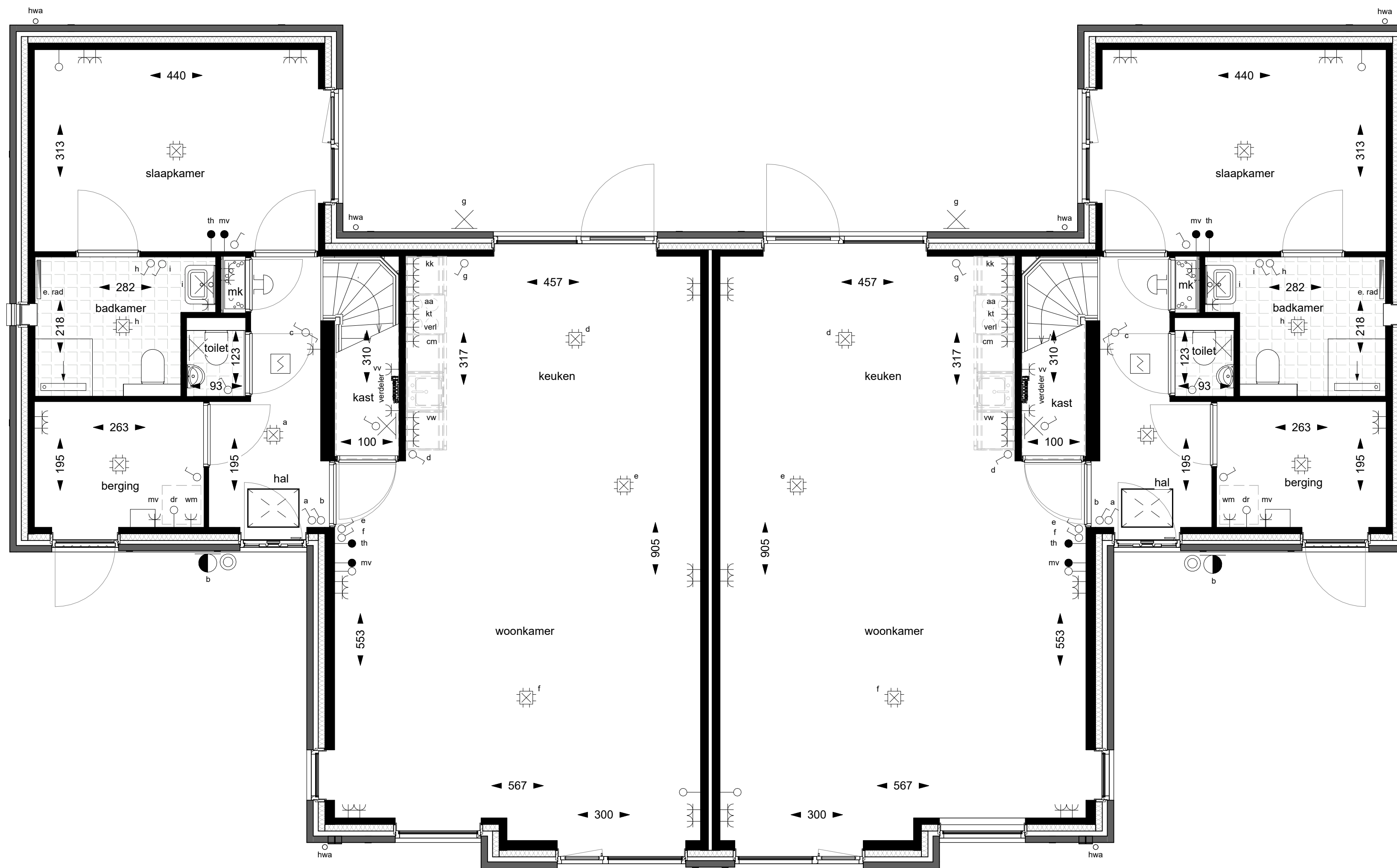
renvooi installaties

	enkelpolige schakelaar
	bediening mech. ventilatie
	wisselschakelaar
	serieschakelaar
	combinatie schakelaar en wcd
	enkele/dubbele wcd met ra
	wcd (mech. ventilatie box)
	wcd (wasmachine)
	wcd (vaatwasser)
	wcd perilex (kooktoestel)
	wcd (combimagnetron)
	wcd (verlichting)
	wcd (koelkast)
	wcd (verdeler vloerverwarming)

	th bedrade leiding t.b.v. thermostaat
	mv hoofdbediening mech. ventilatie
	wp aansluiting warmtepomp
	loze leiding (telefoon/cai/data)
	dr loze leiding (wasdroger)
	plafondlichtpunt
	wandlichtpunt
	wandarmatuur
	© drukknop bel
	belzoemer/schel
	rookmelder (230V)
	e. rad elektrische radiator (positie indicatief)
	verdeler vloerverwarming (positie indicatief)

renvooi algemeen

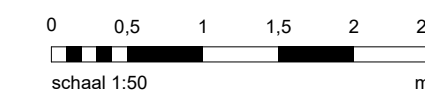
	matrand (+ noodsporing)
	draairichting deur
	wm opstelplaats wasmachine
	mv mechanische ventilatie unit
	wp warmtepomp
mk	meterkast
hwa	hemelwaterafvoer
is	isolerende beglazing
e	enkele beglazing
isg	isolerende veiligheidsbeglazing
vr	ventilatiooster
	30 min. brandwerend

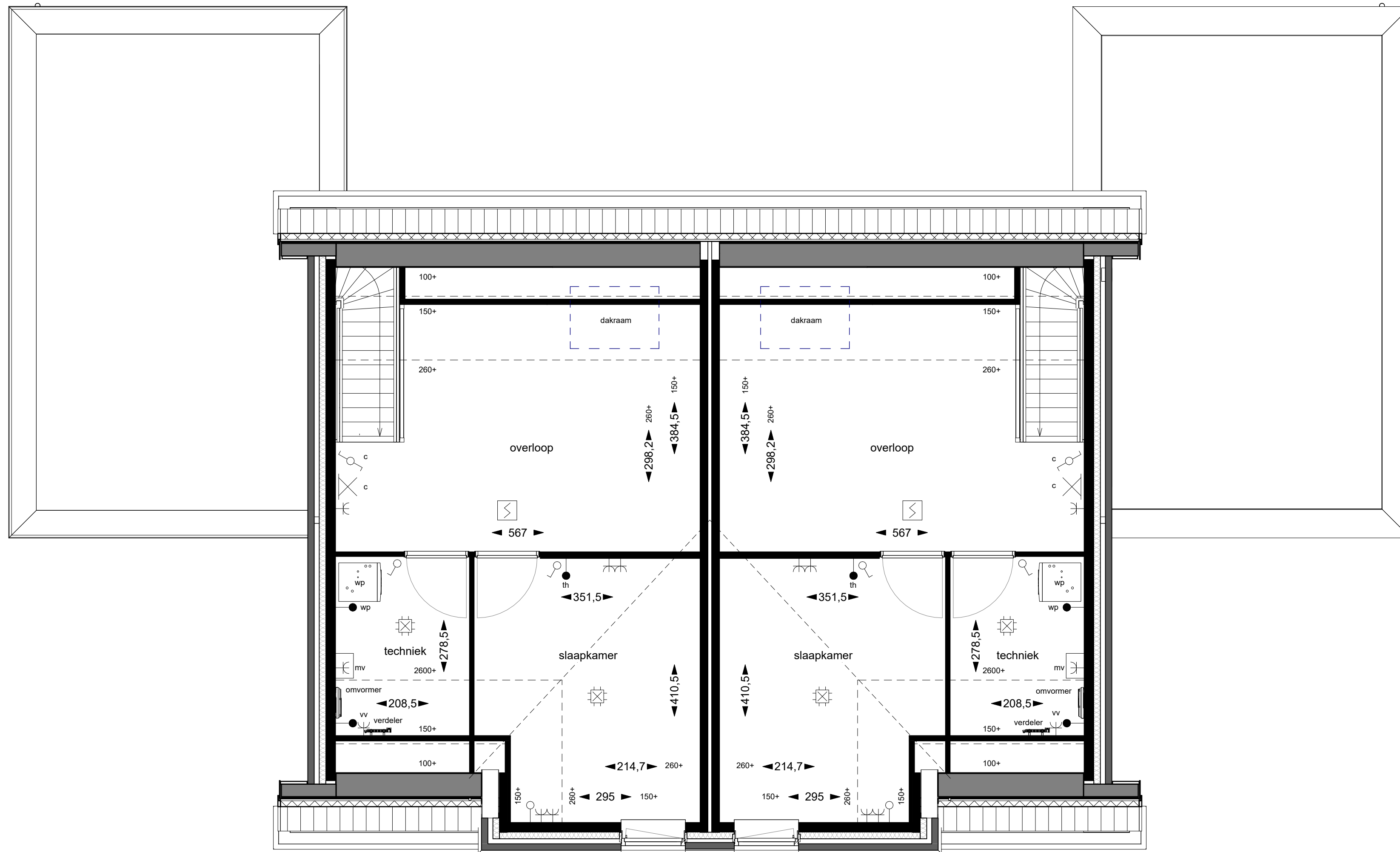


bouwnummer 9 en 11

bouwnummer 10 en 12

Begane grond

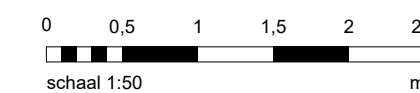




bouwnummer 9 en 11

bouwnummer 10 en 12

Verdieping





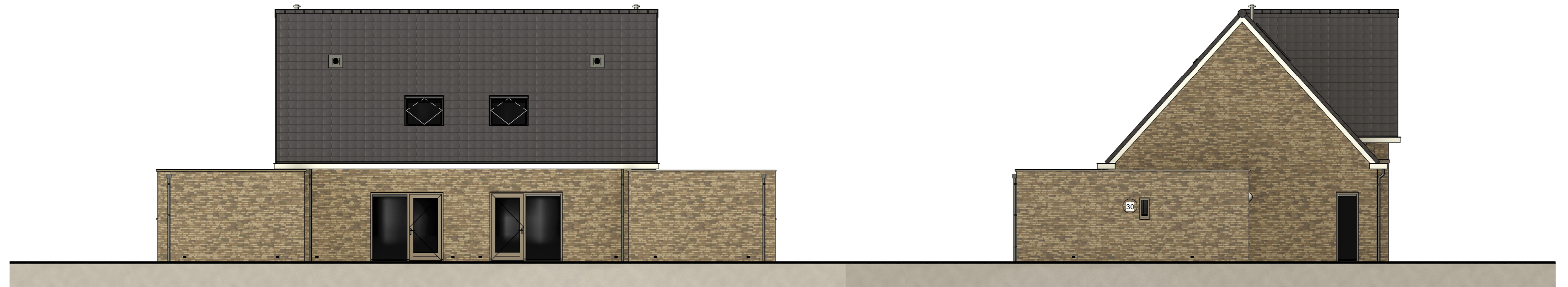
bouwnummer 9 en 11

bouwnummer 10 en 12

bouwnummer 10 en 12

Voorgevel

Rechter zijgevel



bouwnummer 10 en 12

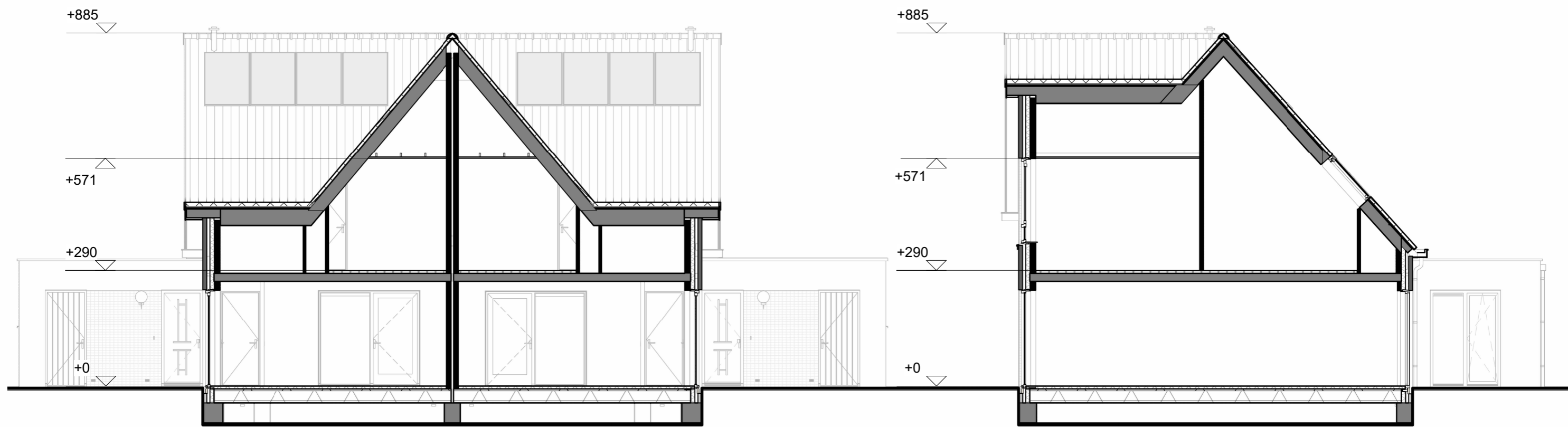
bouwnummer 9 en 11

bouwnummer 9 en 11

Achtergevel

Linker zijgevel





bouwnummer 9 en 11

bouwnummer 10 en 12

bouwnummer 9, 10, 11 en 12

Langsdoorsnede

Dwarsdoorsnede